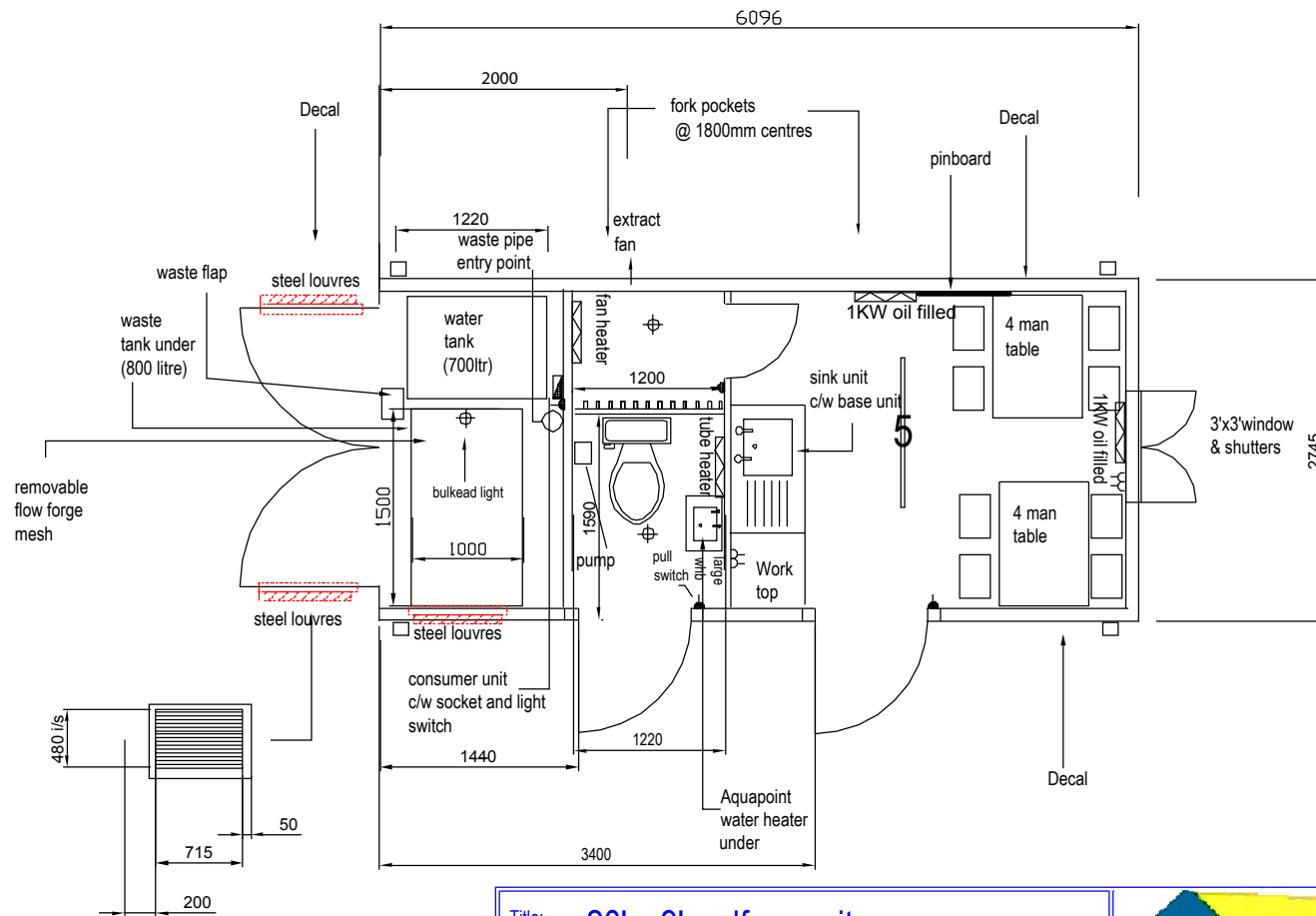


Specification: Approx weight --3500kgs without generator
 Internal Wallboard - 8mm beige melamine
 Ceiling - White mono plywood
 Flooring - 18mm plywood covered by black polyflor c/w welded seams
 Electrics-- wiring to be behind wall boards
 Jacklegs on side of unit
 internal waste tank to be sloping
 hot and cold push down taps
 Zip Aquaint water heater
 dual flush toilet
 drain valve to water tank



Length -- 6096mm
 Width -- 2745mm
 side panel -- 5 corri x 2274mm
 100mm x 50mm RSC bottom rail
 76mm x 38mm top rail
 fork pockets

IF IN DOUBT PLEASE ASK, DO NOT SCALE

Title: 20' x 9' welfare unit	
Date Issued: 02/12/05	Job No:
Drawing No: WEL20 - 2	Revision Status: Rev 1
Scale:	Drawn By:
Tolerance: + or - 10mm	Checked By:
Client:	



20' x 9' Jackleg steel secure welfare unit, Kitchen + drying room/toilet units/office.

- WALLS** Manufactured from 16-gauge steel to BS1449 Part 1 1983 HR4 Drawing quality, folded to form side panels welded to base and roof. Timber studding 75mm x 45mm CLS fully insulated with 80mm Rockwool and lined with 8mm beige melamine.
9.5mm 2 part "H" plastic section at joints (cream) and 40mm Brown plastic skirt at top and bottom of walls.
- ROOF** Manufactured from 3 corrugated 16-gauge mild steel to BS 1449 Part 1 1983 HR4 Drawing quality, welded in place. Timber studding 75mm x 45mm CLS fully insulated with 80mm Rockwool and lined with 3.6mm white mono.
5mm "H" plastic section at joints (white).
- FLOOR** Manufactured from 100mm x 50mm RSC rails with 50mm x 50mm RHS bearers. Floor is from 18mm Far Eastern Plywood Floor finished in 1.5mm black Polyflor XL heat welded at seams. Fork pockets are incorporated in the design of the floor (1800mm centres).
- WINDOWS** 1no aluminium frame, with double sliding single glazed 4mm clear float, standard window size to be 914mm x 914mm.
Manufacturer IC Systems Ltd.
- SHUTTERS** 1no new style Kircroft Ltd shutters internally operated together with hold open catches (type to be male and female rubber door holder)..
- DOORS** 2no Kircroft Ltd doors external opening left hinged. A 10 point locking mechanism comprising of 4 locking points in the middle, 2no at the top and 2no at the bottom of the upright frame and a further 2 bolts in to the top of the framework come as standard.
Double doors manufactured from 3.0mm steel BS 1449 Part 1 1983 HR 15 drawing quality, door to have anti-jemmy flanges to wrap around door frame at hinge side. 2no heavy duty cast hinges with stainless steel pins. Locking to be integral 5-lever lock (Yale 3220 lockcase).
- LIFTING** All units are fitted with 4no lifting points at corners. Non-stackable Jack - legs are also fitted at the side of the unit.
- FINISH** All units finished colour to be BS4800 20D45.

Canteen: -

1no stainless steel sink unit c/w 1no non –concussive cold water tap and a 5ltr ZIP water heater above.

1no storage base unit under sink.

1no 1000mm length of worktop.

2no 4-man McDonalds type table (free standing), 1no 5 ft fluorescent light, 1no 1KW oil filled radiator, 2no double sockets, 1no light switch to operate light in canteen and 1no Connect 1200mm x 900mm green felt pinboard.

Toilet: -

1no low flush W/C & cistern with full elbow wash hand basin inc 2kw warm water hand wash above and 1no non-concussive cold water tap , 1no bulk head light, 1no Stuart Turner pump, 1no tubular heater.

Waste to fall directly into tank

Drying room: -

12 hat & coat hooks, 1no down flow heater, 1no bulkhead light, 1no extractor fan

Generator Room: -

1no built in sloping effluent tank (800ltr) c/w emptying flap for waste. 1no 700ltr water tank c/w drain valve.

1no consumer unit c/w 63amp socket for generator. Louvre vents in 1 sidewall and 2no in doors. 1no bulkhead light c/w switch under consumer unit.

1no steel tray c/w removable flow forge mesh.

1no small exhaust connection point (38.1mm tube) through side of unit.